

HSE

HELSINGIN KAUPPAKORKEAKOULU
HELSINKI SCHOOL OF ECONOMICS



Eero O. Kasanen
Rector

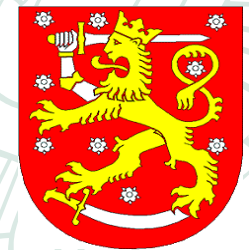
Welcome to the Helsinki School of Economics (HSE), Finland



Finland

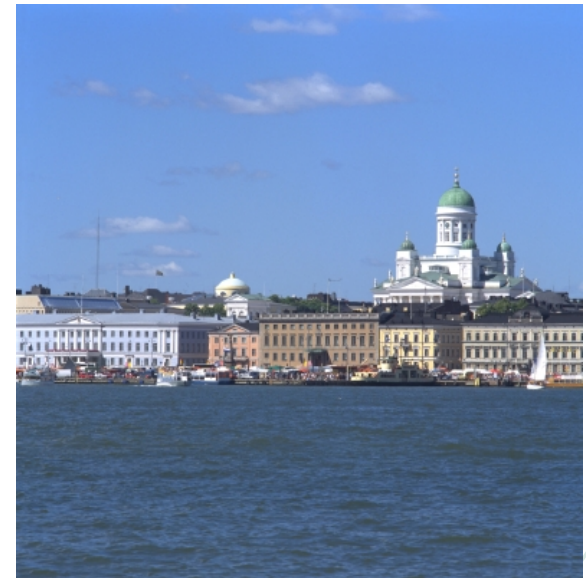


- Located in northern Europe, neighbouring countries: Sweden, Russia, Norway
- Parliamentary republic, the current president is Mrs. Tarja Halonen
- Member of the EU and the Monetary Union (currency: euro)
- A safe, well-functioning society with no corruption and a high level of public services
- Nature and climate:
 - Forests cover ca 70% of the surface of 338,000 km²
 - 190,000 lakes and about as many islands
 - Warm summers and cold winters



Helsinki

- The northernmost capital of the EU
- Including suburbs, 1,000,000 inhabitants
- The sea accounts for 501 km² of Helsinki's total area of 686 km²
- Many green areas and also technology centres (including **Nokia** headquarters) in the Helsinki metropolitan area



Helsinki School of Economics

- Established in 1911
- Largest Business School in Finland with 4 000 students, (10% International)
- Campuses in Helsinki and Mikkeli (230 km)
- Internationally recognized scientific research
- Strong corporate connections; partnership program
- Degree programs: BSc, MSc, DSc, PhD
- Non-degree programs (HSEEE Ltd.): MBA, EMBA in Finland, Singapore, Poland, China, Korea



Accreditations and International Networks



- HSE was among the first European business schools to receive **EQUIS** accreditation
- HSE was the first Nordic business schools to receive **AACSB** accreditation
- The international MBA programme has been awarded **AMBA** accreditation by the Association of MBAs, UK
- Member of **CEMS** (Community of European Management Schools)
- Member of **PIM** (Partnership in International Management), a global network of the world's leading business universities

Departments

Business Technology
Economics
Accounting and Finance
Marketing and Management
Languages and Communication

- Interdisciplinary program
based teaching



Bachelor's Programs in English

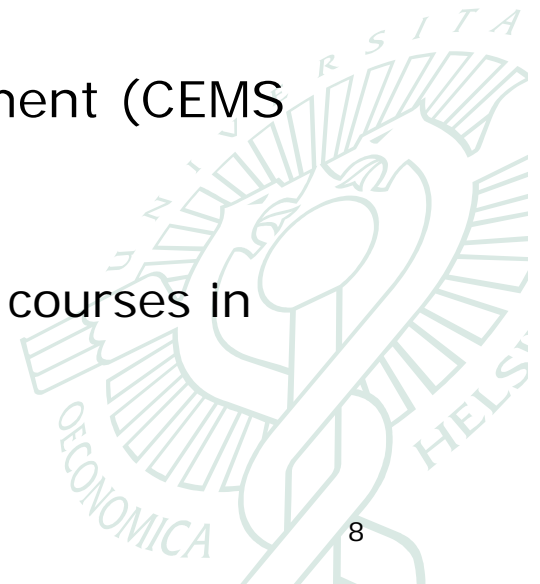
- Accounting, Finance and Business Law; with specialisation in Finance
- Business Technology
- International Business (Mikkeli campus)



Master's Programs in English

- Economics
- Entrepreneurship
- Finance
- International Business
- International Business Communication
- Information and Service Management
- Logistics and Service Economics
- Marketing
- CEMS Masters in International Management (CEMS MIM) European joint degree program

In addition other programmes have many courses in English



Other Programs

- Special Programs
 - ITP (Information Technology Program)
 - IDBM (International Design Business Management)
 - Joint degree
 - CEMS MIM (Master in International Management)
 - Double degree programs
 - University of Cologne
 - Louvain School of Management
- HSE Executive Education Ltd.
 - MBA and EMBA –programs
 - Campuses in Singapore, Poland, China, South Korea and Taiwan



Student mobility

- 250 outgoing exchange students /year
- 250 incoming exchange students /year
- Active student exchange with 140 universities all over the world
- HSE service concept covers housing, study advising, tutoring, extra curricular program, etc.



HSE International Relations 2008



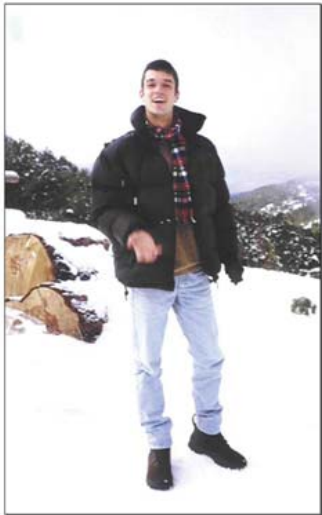
HSE facilities

- Helecon information centre, library services, database
- Self-study and computer facilities, including individual email accounts
- Gym, free of charge
- School bookstore (both new and second-hand books)
- Several benefits for KY (Student Union) members
- HSE in a walking distance from downtown Helsinki



KY (Student Union)

- Activities and services include e.g.
 - Tutoring and housing
 - Reduced meal prices
 - Health care
 - Book store
 - Discounts for cultural events and sports
 - Trips e.g. to Lapland (northern Finland), St Petersburg (Russia) and Stockholm (Sweden)
 - Social events such as spending a weekend at a cottage, parties, cultural events
- All KY services and clubs are available to you!
- www.kyweb.fi/en (KY)



Why Finland and HSE?



- Interdisciplinary study programs in English
- Internationally acknowledged and accredited top-level business school
- Close connections with business life
- Century-long traditions
- Student Union provides services and looks after students interests
- Finland No 1 in OECD ´s Programme for International Student Assessment (PISA)
- Practically everyone speaks English in Finland
- Opportunities to travel in Russia, other Nordic countries and the Baltic countries
- Lots of forests and lakes. Snow and freezing temperatures in the winter, midnight sun in the summer
- Meet Father Christmas and the Moomins!



Application and admission

- Please contact the coordinator at your home university
- More information available at <http://www.hse.fi/EN/education/exchange/>



More Information

- www.virtual.finland.fi/
- www.aktivist.fi/inenglish
- www.hel.fi/english



Your contact at HSE

- <http://www.hse.fi/EN/education/exchange/>
- e-mail: exchange@hse.fi

